



STX PRECISION (JB) SDN BHD

COMPANY PROFILE



**NON-FERROUS METAL HEAVY INDUSTRY (HIGH PRESSURE DIE-CASTING)
& ENGINEERING SUPPORTING SERVICES (ESS)**

Customized development of Product, Alloys and Processes.

www.stx.com.my

***We aim to be one of the biggest (Top 10)
Original Equipment Manufacturers (OEM)
specializing in casting of non-ferrous metals (alloys) and
engineering supporting (metalworking) services
operating within ASEAN region
for our global customers involving in
various industrial segments.***





Integrity

We believe integrity is at the heart of our individual and corporate actions.

Quality Driven

We focus on doing the right things and no compromise on quality.
“Near Enough is never Good Enough”

Cost Effectiveness

We empathizes on cost effectiveness for all activities, thus to be profitable and meeting the change of market demands.

Customer Orientated

We place our customer at the core of the company’s business and ensure high quality services. “It begins and ends with our customer”

Effective Communication

We believe on engaged listening and open communication are essential for a productive and efficient workplace.

Human Development

We believe the best way to improve productivity is to provide an opportunity for people to learn and improve their personal skills, organizational skills, knowledge, and abilities that contribute to the work process and to be satisfied with their achievements.

Teamwork

Together everyone achieves more and success will go hand-in-hand.



STX PRECISION (JB) SDN BHD

STX PRECISION (JB) SDN BHD (Headquarter)



PLANT 1

Lot 153 (No. 17A), Jalan Angkasa Mas 6
Kawasan Perindustrian Tebrau II,
81100 Johor Bahru
Johor, Malaysia.

Aluminium Die Casting,
Deburring



PLANT 2

PLO 170 (No.2), Jalan Angkasa Mas 3,
Kawasan Perindustrian Tebrau II,
81100 Johor Bahru
Johor, Malaysia.

Precision CNC Machining,
Design & Fabrication of Molds,
Jigs and Fixtures



PLANT 3

Lot 154 Jalan Angkasa Mas 6,
Kawasan Perindustrian Tebrau II,
81100 Johor Bahru
Johor, Malaysia.

Powder Coating, Assembly,
Zinc Die Casting



STX PRECISION (JB) SDN BHD STRUCTURE

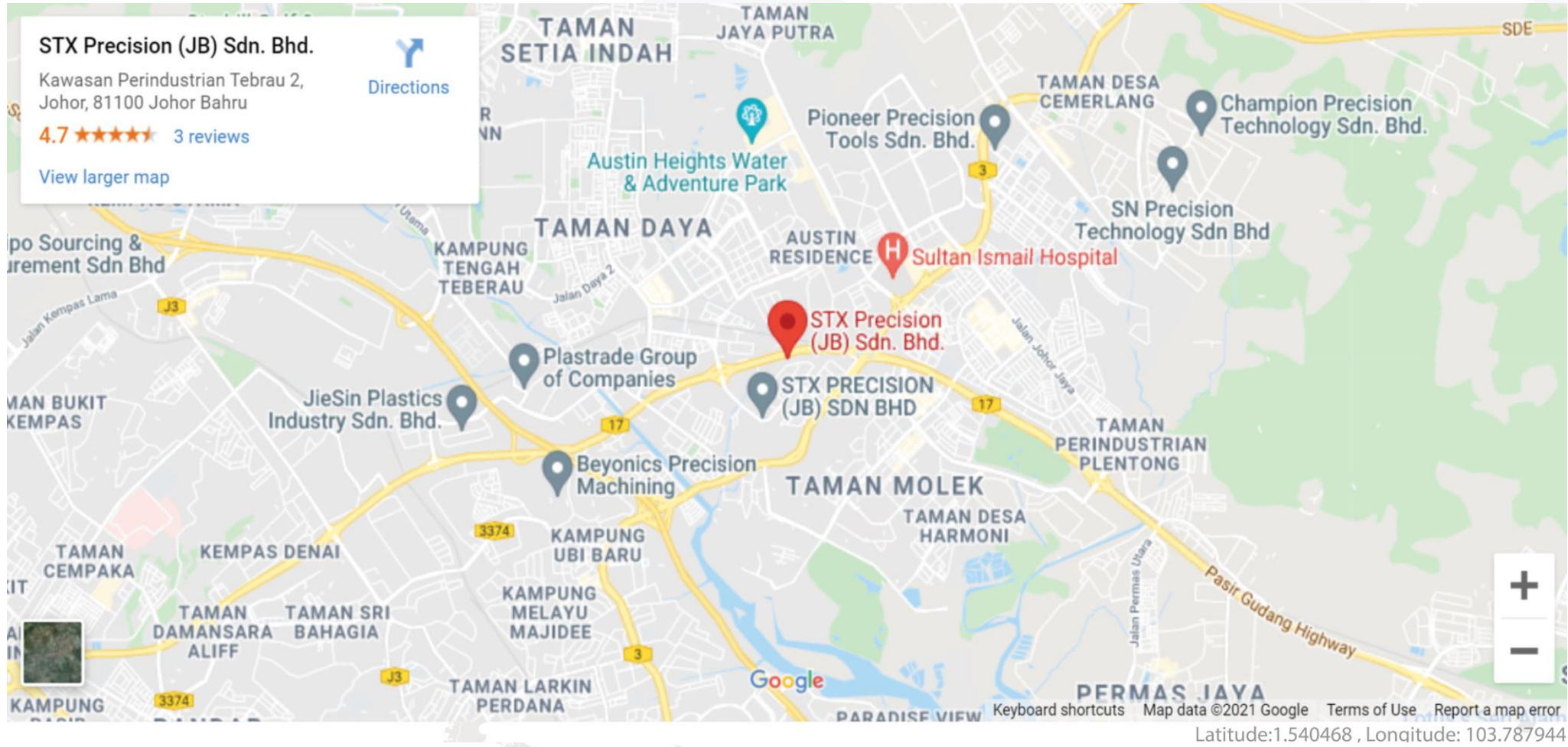


STG CO. LTD

**STX Precision (JB)
Sdn Bhd
(100%)**



STX COMPANY LOCATION MAP





HISTORY TIMELINE (1988-2019)

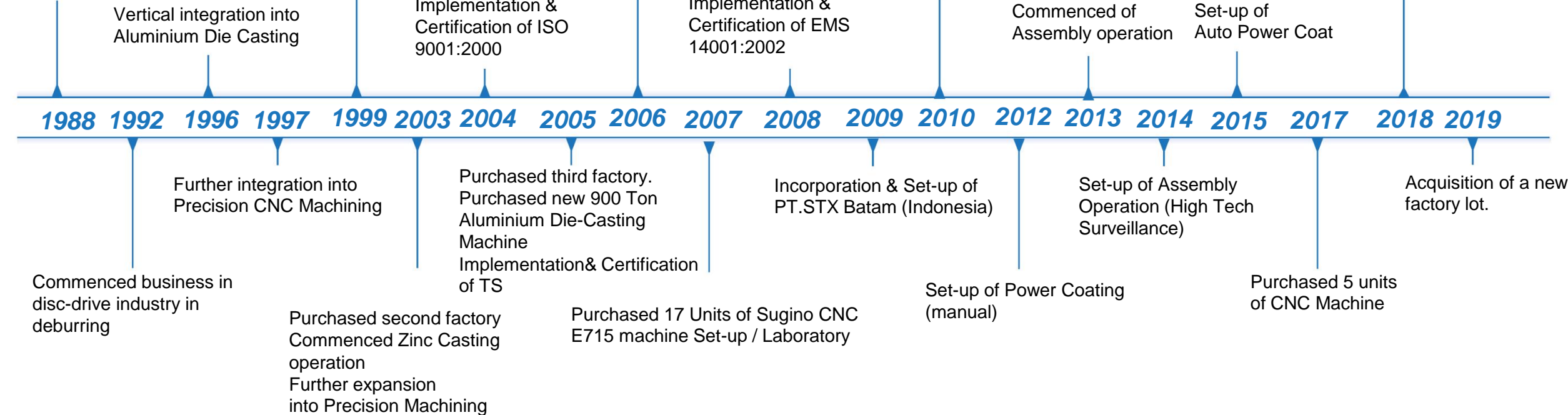
Sumber Terang incorporated in August 1988 as an assembler in wire-harnessing and connector

Implementation & Certification of ISO 9002:1994

Commenced Design & Fabrication of Molds, Jigs & Fixtures

Purchased & Set-up of 2 Ultrasonic Washing Line. Purchased new 1250 Ton Aluminium Die-Casting Machine

Purchased mold flow simulation software. Purchased / upgraded 5 units of CNC machines



stx ROADMAP

- Acquisition of JB3 Plant
- Set-up assembly operations
- Tool room machineries upgraded

- Purchased vacuum casting system
- Upgraded die-casting and CNC machines.

- Purchased mold flow simulation software
- Purchased/upgraded 5 units of CNC machines

2012 / 2013

2015

2018

2014

2017

2020

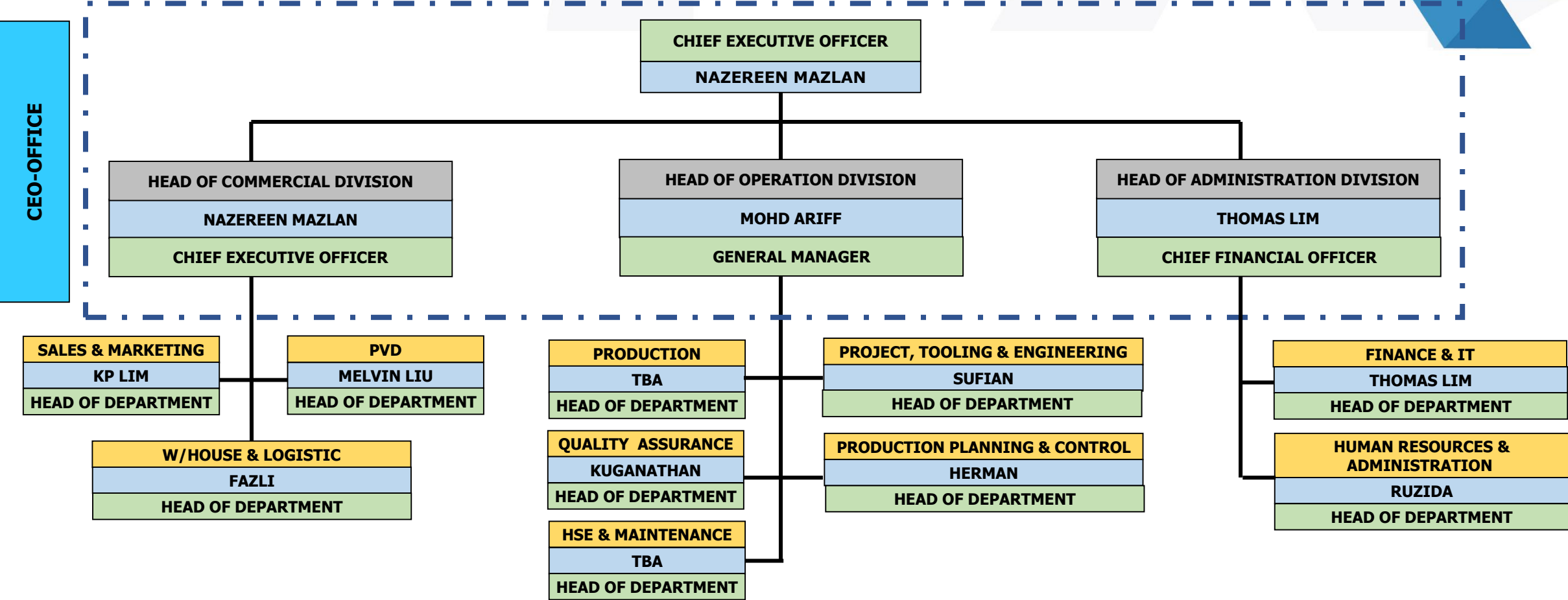
- Setup powder coating lines
- Expansions of Batam2 Plant
- Purchased 800T casting machine & CNC machines for Batam Plant

- Purchased 5 units of CNC machines

- Relocation of STX 1, 2 & 3



MANAGEMENT TEAM



PROJECT MANAGEMENT CYCLE



01.
Customer
Input

3D Concept
Concept Sketch
Initial Layout

02.
Design
Development

Planning Layout
Design Feasibility
2D & 3D Modeling

03.
Design
Verification

Flow Simulation
DV Test

04.
Product
Validation

Production Drawing
Approval Drawing

05. Mass
Production

Software: AUTOCAD for 2D Design & QuickCast for Flow Simulation



www.stx.com.my

RANGE OF EQUIPMENT

Aluminium Die-Casting Machines (Total - 15 units)

I.	135T die-casting machine	
	• Toshiba	2 units
II.	250T die-casting machine	
	• Toshiba	1 unit
	• UBE	1 unit
III.	350T die-casting machine	
	• Toshiba	5 units
	• UBE	2 units
IV.	500T die-casting machine	
	• Toshiba	1 unit
	• Zhenli	1 unit
V.	900T die-casting machine	
	• Zitai	1 unit
VI.	1250T die-casting machine	
	• Zitai	1 unit



Trimming Machines (Total - 17 units)

• Trimming Machine 20T	15 units
• Trimming Machine 30T	2 units



Zinc Die-Casting Machines (Total - 7units)

• Angle Cast 20 T	2 units
• Producer 75 T	2 units
• Producer 130T	1 unit
• Producer 200T	1 unit
• Producer 250T	1 unit

RANGE OF EQUIPMENT

Mold, Tool & Die Machines

(Total - 27 units)

• Twinhorn CNC Machining Center VQ-1300	1 unit
• Makino CNC Machining Center S33 -A20	1 unit
• YCM CNC Machining Center NSV-102A	1 unit
• Makino CNC EDM EDNC -2	1 unit
• Makino CNC EDM EDNC 65	1 unit
• Topma EDM Precision Spark Erosion Machine T-430	1 unit
• Ichi Seiki Ard Spark Machine	1 unit
• Wire Electrical Discharge Machine DUO64	1 unit
• Ichi Seiki Drilling EDM SK -3020NA	1 unit
• Kent Surface Grinding Machine KGS-510AHD	1 unit
• Joen Lih Grinding Machine Surface Grinder JL-618	1 unit
• Joen Lih Grinding Machine Surface Grinder JL-618SA	1 unit
• Dowell Surface Grinding Machine Model : 618	1 unit
• Ichi Seiki Surface Grinding Machine HF 618	1 unit
• Tone Fan Radial Drilling Machine TF-1100	1 unit
• Manford Vertical Milling Machine	2 units
• Ichi Seiki Vertical Milling Machine SHCM-97VS	1 unit
• Ichi Seiki Vertical Milling Machine MDV-30	1 unit
• Ichi Seiki Vertical Milling Machine MDV-4.5	1 unit
• Gentiger Vertical Milling Machine SHCM-97VS (5HP)	1 unit
• Samson Vertical Milling Machine S-3A	2 units
• Ichi Seiki Lathe 430 x 1000	1 unit
• Charless Lathe CH-430X1000	1 unit
• Chin Hung Lathe CH-430X1000	1 unit
• HBS Laser Marking	1 unit



Bearing Flange



Straight Base



Housing Moderm



Frame



RANGE OF EQUIPMENT

Precision CNC Machines

(Total - 50 units)

• Fanuc Robodrill a-D21LiB	12 units	• Ares Seiki R4530	1 unit
• Fanuc Robodrill a-D21MiB	3 units	• Top Well TW-400HV	1 unit
• Etec EL-1166	5 units	• Akira SL40MC	1 unit
• Kiwawi Howa	2 units	• Akira SL25	1 unit
• Akira Seiki S-500	4 units	• Femco HL-25N	2 units
• Akira Seiki RMV-500T	1 unit	• Mazak OT-10	1 unit
• Akira Seiki SR3	2 units	• Kasuga T700	1 unit
• Akira Seiki V2.5 XP	6 units	• Brother TC 312N	1 unit
• Akira Seiki V5 XP	2 units		
• Akira Seiki S V5.5	1 unit		
• Akira Seiki V5.5 XP	2 units		
• Akira Seiki A-500 T	1 unit		



RANGE OF EQUIPMENT

Secondary Process Equipment (Total - 16 units)

- Rosler Tumbling Machine 9 units
- Shot Blasting Machine 2 units
- Sand Blasting Machine 3 units
- Robotic Arm Deburred 1 unit
- Box Oven 1 unit

Washing Line (Total - 2 units)

- DI Ultrasonic 1 unit
- Auto Washing Machine 1 unit

Powder Coat Equipment (Total - 3 units)

- Auto Conveyor Curing Oven 1 unit
- Box Oven 2 units



Powder Coating Cartridge Booth



Conveyor Powder Coat



DI Ultrasonic Washing Line



Packaging Area



Assembly Line



Conventional Drilling & Milling

PRECISION MEASURING EQUIPMENT LIST



CMM Machine

- | | |
|-----------------------------|---------|
| • Mitutoyo | 2 units |
| • Aberlink | 1 unit |
| • Hexagon (Brown and Sharp) | 3 units |

Profile Projector

- | | |
|-------------|--------|
| • Mitutoyo | 1 unit |
| • Deltronic | 1 unit |

Spectrometer (Spark Emulsion)

- | | |
|------------|--------|
| • Shimadzu | 1 unit |
|------------|--------|

Video Measuring Scope

- | | |
|---------------|--------|
| • View Master | 1 unit |
|---------------|--------|

Others

- | | |
|-------------------------|--------|
| • Digital High Gauge | 1 unit |
| • Digital Micrometer | 1 unit |
| • Pin Gauges | 1 unit |
| • Block Gauges | 1 unit |
| • Digital Caliper | 1 unit |
| • Granite Surface Plate | 1 unit |



CMM Machine



Spectrometer (Spark Emulsion)



Profile Projector

PRODUCTS – NON AUTOMOTIVE



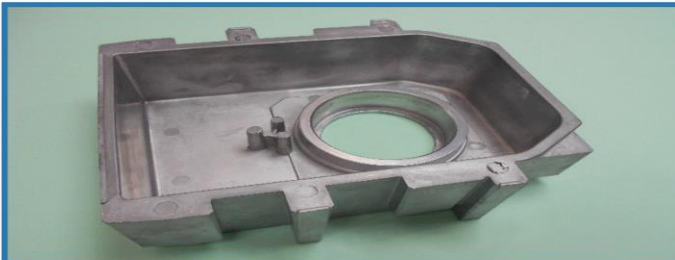
Camera Housing
Surveillance Components



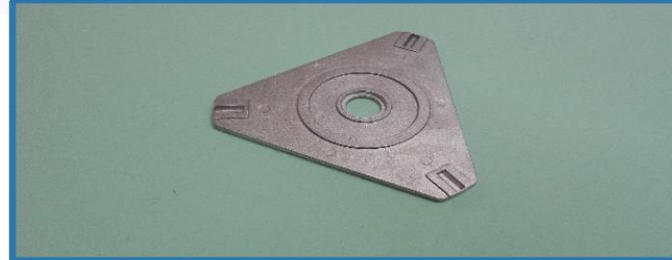
Upper Shell & Chasis
Telecommunication Components



Pen Pocket Integrated
Industrial Components



Drive Roller Support
Industrial Components



Deck Plate
Electrical Component



Draifuss
Measurement Technology



Rotor Inner & Outer
Medical Equipment



Before
Assembly

After
Assembly



Surface Finishing and Treatment

stx PRODUCTS - AUTOMOTIVE



Cylinder Block



Cylinder Head



DCM 2-5



Oil Pan



Case 7



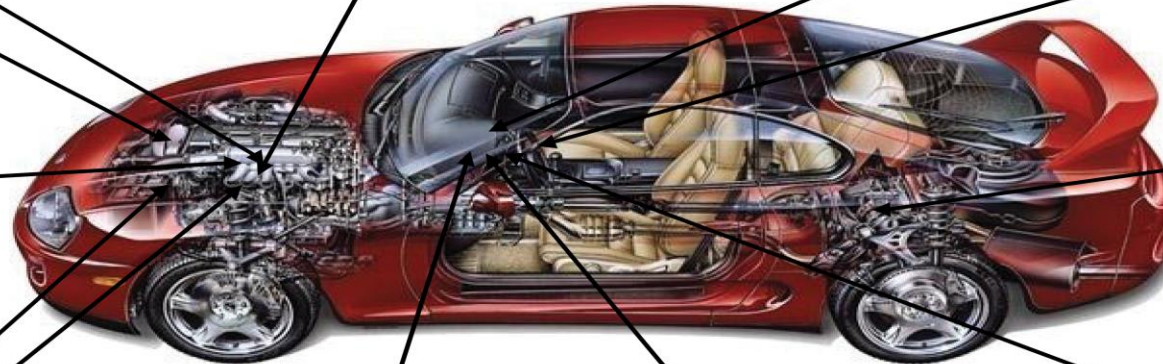
Cover



Housing



Housing



Housing



Heat Sink



Heat Sink



Heat Sink



OVERVIEW

Date of Corporation : Aug 1988
Business Nature : Manufacture and Sale of Aluminium and Zinc Die Casting, Precision CNC Machining, Powder Coating & Assembly of Parts and Components Design & Fabrication of Molds, Jigs & Fixtures.
Workforce : 417 persons



QUALITY CERTIFICATION



STXJB -ISO 14001: 2015
 Certificate No:
 QA-D/MYS/14001/0066



STXJB -ISO 9001: 2015
 Certificate No:
 N°2010/36966.3



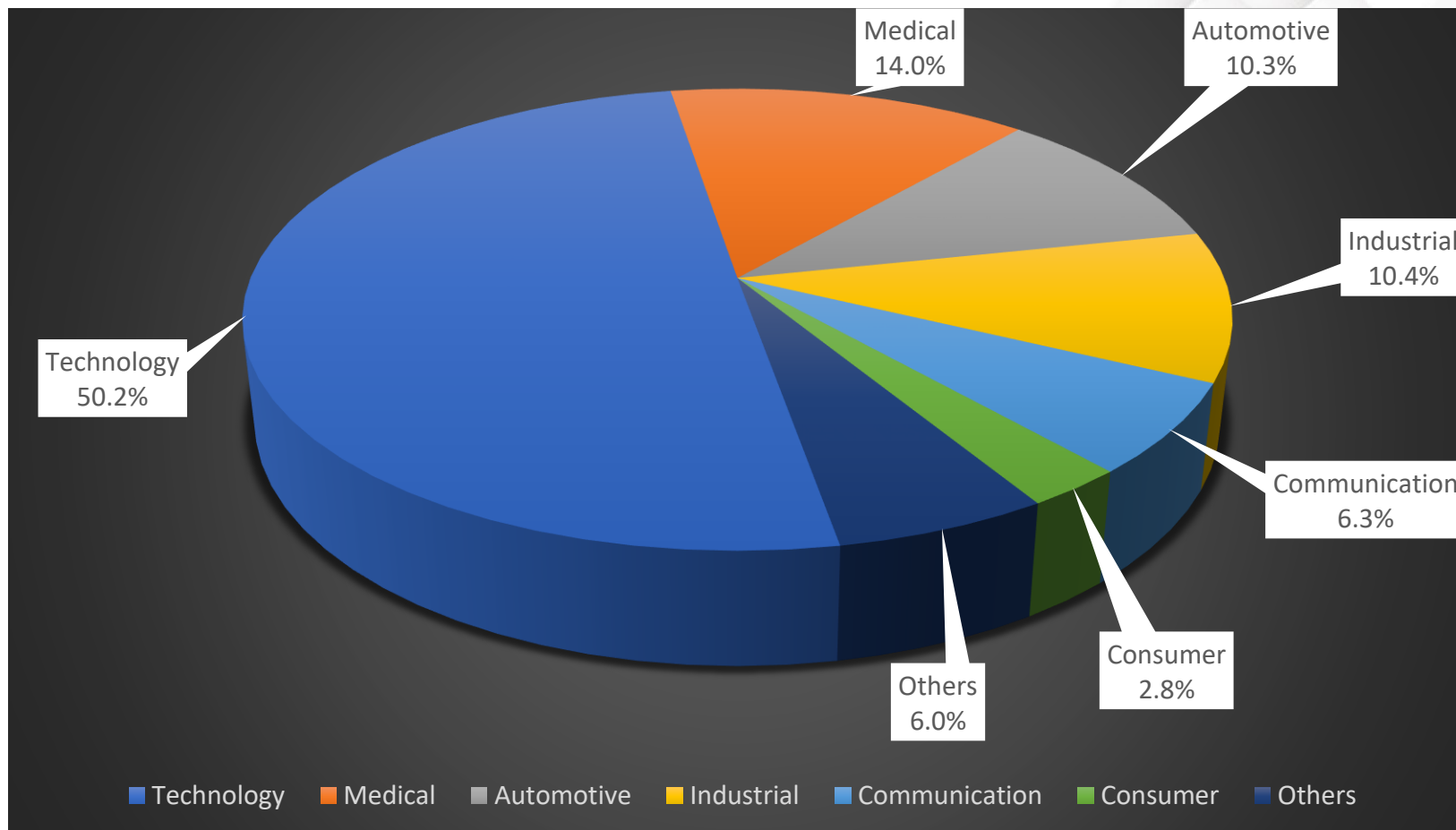
STXJB -IATF 16949 : 2016
 Certificate No:
 36965

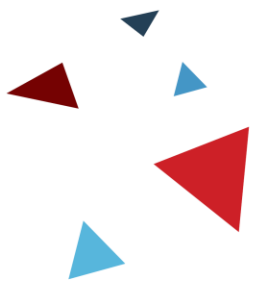




INDUSTRIES SEGMENT SALES 2021

Serving wide range of industries to weather cyclical economy impact





THANK YOU

www.stx.com.my



**STX PRECISION (JB)
SDN BHD**